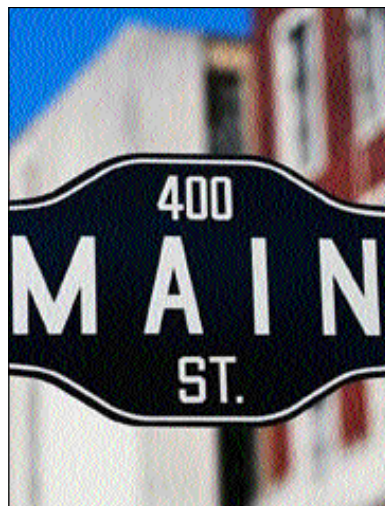
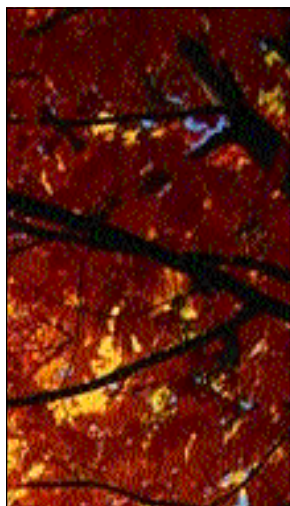


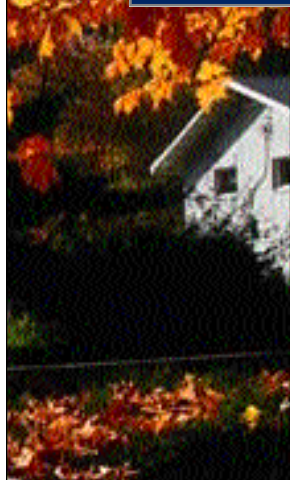


# 2001 - 2002 State Legislative Voting Record



Building a stronger economy for our families,  
our communities and Wisconsin's future.

WISCONSIN MANUFACTURERS & COMMERCE VISION STATEMENT



Wisconsin Manufacturers & Commerce is a voluntary business association dedicated to fostering and advancing policies which are in the public interest of our state and nation. WMC is the state's largest and most influential business lobby. The following is the organization's mid-legislative session update.

*A condensed version of the scorecard will appear in the October 2002 edition of Corporate Report Wisconsin.*

# A Message from WMC's President



**WISCONSIN  
MANUFACTURERS  
& COMMERCE**

501 E. Washington Ave.  
P.O. Box 352  
Madison, WI 53701  
608/258-3400  
www.wmc.org

James S. Haney  
*President*

James A. Buchen  
*Vice President -  
Government Relations*

Nickolas George  
*Executive Director*

Joan Hansen  
*Director - Tax &  
Corporate Policy*

John Metcalf  
*Director - Human  
Resources Policy*

Jeff Schoepke  
*Director -  
Environmental Policy*

**Produced by:**  
Trails Media  
Group Inc.

**Underwritten by the  
following WMC  
members:**

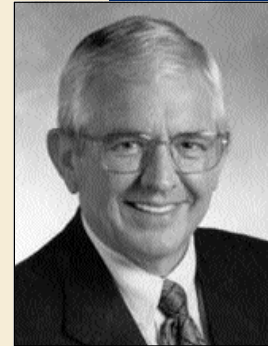
SBC Ameritech  
Wisconsin  
*Paul La Schiazza*

Michael, Best and  
Friederich  
*John MacIver,  
Senior Partner*

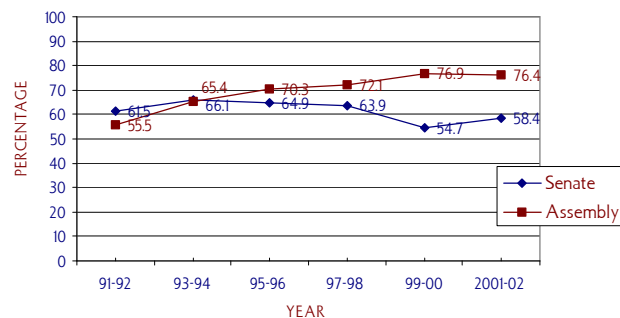
Swiss Colony  
*Jim Baumann,  
President*

During the 2001-2002 Legislative Session, 109 bills passed both houses of the legislature and were signed into law. That is the fewest number of bills to pass any legislature since Wisconsin became a state in 1848. It is partially a reflection of the deep partisan and philosophical division between the two houses, as well as the budget deficit and the distraction of ongoing investigations into legislative campaign activity.

The information recorded here covers 10 votes in the Senate and 14 votes in the Assembly in various categories. To make this legislative record valuable to business people, we have eliminated partisan posturing and have chosen the vote most crucial to a bill's fate. We have not weighted these issues because we recognize that particular issues are more important to some members than others. We have also compiled a cumulative voting percentage for each legislator, as well as a composite of votes cast for the WMC position in each house over the last decade.



Composite of Votes Cast Supporting WMC Positions  
1992-2002



## WHAT IS WMC?

Wisconsin Manufacturers & Commerce is a voluntary business association of more than 4,600 member firms throughout Wisconsin. Together, the firms employ nearly 25 percent of the state's private-sector workforce. With members of every size and type, and members in each of Wisconsin's 72 counties, we represent a broad cross section of the state's economy. For example, 50 percent of our members are manufacturers and 50 percent are service industries, including transportation, utilities, wholesaling, retailing, construction, agriculture, finance, insurance, communications, real estate and health care.

We are proud to represent the interests of small business, as well as the largest companies in the state. Nearly one-half of our members have fewer than 50 employees, and our largest firm employs more than 10,000 people.

OUR MISSION STATEMENT READS:

***"WMC is a business association dedicated to fostering and advancing policies which are in the public interest of our state and nation."***

# State Senate Voting Record

## DNR SECRETARY

### Senate Bill 3

**WMC POSITION:** Oppose

**STATUS:** PASSED THE SENATE; DIED IN THE ASSEMBLY.

This bill shifts appointment of authority for the DNR Secretary from the Governor to the Natural Resources Board. The vote recorded here is for passage in the Senate.

## PRIORITY OF WAGE CLAIM LIENS

### Senate Bill 17

**WMC POSITION:** Oppose

**STATUS:** PASSED THE SENATE; DIED IN THE ASSEMBLY.

SB 17 gives the wage liens filed by workers against the assets of bankrupt companies priority over the pre-existing liens of financial institutions. The vote recorded here is for passage in the Senate.

## STATE BIENNIAL BUDGET

### Senate Bill 55 - Senate Substitute Amendment 1

**WMC POSITION:** Oppose

**STATUS:** SSA 1 PASSED IN THE SENATE.

The Senate version of the state budget included the following provisions:

**COMBINED TAX REPORTING** - The Senate version of the budget included combined tax reporting which is a radical change in the way corporate income taxes are calculated and results in a \$98 million tax increase for Wisconsin businesses.

**RECYCLING TAX** - The Senate budget raised the solid waste disposal tax tenfold from \$.30/ton to \$3.00/ton - a \$65 million tax increase.

**MINIMUM WAGE INCREASE** - The Senate budget would have indexed the state minimum wage to the federal poverty level, immediately increasing it from \$5.15 to \$7.50 per hour.

**LOCAL OPTION FEES** - The Senate budget would have allowed municipalities to impose a "service fee" on property owners to pay for municipal services regardless of whether they receive the services.

**REVENUE LIMIT EXCEPTION** - The Senate budget would have allowed school districts to exceed the current revenue caps by 78-percent per year (on average) without a referendum.

**SALES TAX ON CUSTOM COMPUTER SOFTWARE** - The Senate budget contained a sales tax on custom computer software and related services, increasing business taxes by \$16 million in 2002 and \$36 million in 2003.

**TELEPHONE TAX** - The Senate budget would have allowed municipalities to impose a local gross receipts tax on telephone companies.

**CORPORATE INCOME TAX DEDUCTION** - The Senate budget would have limited the deductibility of compensation paid to executives to no more than 25 times the compensation of the lowest paid full-time employee of the company, increasing corporate income taxes in Wisconsin by \$17 million.

The vote recorded here is for passage of Senate Substitute Amendment 1 in the Senate.

## MENTAL HEALTH/AODA PARITY

### Senate Bill 157

**WMC POSITION:** Oppose

**STATUS:** PASSED THE SENATE; DIED IN THE ASSEMBLY.

SB 157 requires insurers to provide mental health/AODA (nervous and mental disorders, alcoholism, and other drug abuse problems) treatment coverage on the same basis as other health insurance coverage. The vote recorded here is for passage in the Senate.



## MEDICAL MALPRACTICE

### Senate Bill 193

**WMC POSITION:** Oppose

**STATUS:** PASSED THE SENATE; DIED IN THE ASSEMBLY.

SB 193 allows a parent to recover for loss of society and companionship if the parent's adult child dies as the result of medical malpractice. The vote recorded here is for passage in the Senate.

## BAN ON MANDATORY HOURS OF EMPLOYMENT FOR HEALTH CARE WORKERS

### Senate Bill 211

**WMC POSITION:** Oppose

**STATUS:** PASSED THE SENATE; DIED IN THE ASSEMBLY.

This bill prohibits health care institutions from scheduling workers involved directly in patient care for more than eight-hour shifts or forty hours of work in a week. The vote recorded here is for passage in the Senate.

## WORKER'S COMPENSATION REFORM

### Senate Bill 251

**WMC POSITION:** Support

**STATUS:** SIGNED INTO LAW AS 2001 WI ACT 37.

SB 251 makes various changes to the worker's compensation law recommended by the Wisconsin Worker's Compensation Advisory Council (WCAC). WMC staff serves on the WCAC - which consists of five management and five labor representatives. SB 251 is a consensus package of worker's compensation reforms developed by the WCAC. The vote recorded here is a "voice vote" for passage in the Senate.

## CORPORATION LAW REFORM

### Senate Bill 333

**WMC POSITION:** Support

**STATUS:** SIGNED INTO LAW AS 2001 WI ACT 44.

SB 333 makes a variety of changes to Wisconsin's corporation and securities laws including those sections relating to merger and conversion of business entities, exemptions from securities registration requirements. The vote recorded here is for passage in the Senate.

## CHANGES TO THE UNIFORMITY CLAUSE

### Senate Joint Resolution 59

**WMC POSITION:** Oppose

**STATUS:** ADOPTED IN THE SENATE; DIED IN THE ASSEMBLY.

SJR 59 would allow for the non-uniform distribution of property tax relief, shifting the burden from residential and agricultural property taxpayers to commercial and industrial. The vote recorded here is for adoption in the Senate.

## UNEMPLOYMENT INSURANCE REFORM

### Assembly Bill 553

**WMC POSITION:** Support

**STATUS:** SIGNED INTO LAW AS 2001 WI ACT 35.

AB 553 is the UI Reform bill recommended by the Unemployment Insurance Advisory Council (UIAC) and contains various changes in the unemployment insurance law. WMC staff serves on the UIAC - which consists of five management and five labor representatives. The vote recorded here is for concurrence in the Senate.

## STATE SENATE

SENATOR	SB 3	SB 17	SB 55- SSA1	SB 157	SB 193	SB 211	SB 251**	SB 333	SJR 59	AB 553	w/ WMC
Baumgart, J. (D)	O	O	O	O	O	O	S	S	O	S	30%
Breske, R. (D)	O	O	O	S	O	O	S	S	O	S	40%
Burke, B. (D)	O	O	O	O	O	O	S	S	O	S	30%
Chvala, C. (D)	O	O	O	O	O	O	S	S	O	S	30%
Cowles, R. (R)	O	S	S	S	S	S	S	S	S	S	90%
Darling, A. (R)	S	S	S	S	S	S	S	S	S	S	100%
Decker, R. (D)	O	O	O	O	O	O	S	S	O	S	30%
Ellis, M. (R)	S	O	S	S	S	S	S	S	S	S	90%
Erpenbach, J. (D)	O	O	O	O	O	O	S	S	O	S	30%
Farrow, M. (R)	S	#	#	#	#	#	#	#	#	#	100%
Fitzgerald, S. (R)	S	S	S	S	S	S	S	S	S	S	100%
George, G. (D)	O	O	O	O	O	O	S	S	O	S	30%
Grobschmidt, R. (D)	O	O	O	O	O	O	S	S	O	S	30%
Hansen, D. (D)	O	O	O	O	O	O	S	S	O	S	30%
Harsdorf, S. (R)	S	O	S	O	S	S	S	S	S	S	80%
Huelsman, J. (R)	S	S	S	O	S	S	S	S	S	S	90%
Jauch, R. (D)	O	O	O	O	O	O	S	S	O	S	30%
Kanavas, T. (R)	*	S	*	S	S	S	S	S	S	S	100%
Lasee, A. (R)	S	S	-	S	S	S	S	S	S	S	100%
Lazich, M. (R)	S	S	S	S	O	S	S	O	S	S	80%
Meyer, M. (D)	O	O	O	O	S	O	S	S	O	S	40%
Moen, R. (D)	O	O	O	O	O	O	S	S	O	S	30%
Moore, G. (D)	O	O	O	O	O	O	S	S	O	S	30%
Panzer, M. (R)	S	S	S	O	S	S	S	-	S	S	89%
Plache, K. (D)	O	O	O	O	O	O	S	S	O	S	30%
Risser, F. (D)	O	O	O	O	O	O	S	S	O	S	30%
Robson, J. (D)	O	O	O	O	O	O	S	S	O	S	30%
Roessler, C. (R)	S	S	S	O	S	S	S	S	S	S	90%
Rosenzweig, P. (R)	S	S	S	O	S	O	S	S	S	S	80%
Schultz, D. (R)	O	S	S	S	S	S	S	S	S	S	90%
Shibilski, K. (D)	O	O	O	O	S	O	S	S	O	S	40%
Welch, R. (R)	S	S	S	S	S	S	S	S	S	S	100%
Wirch, R. (D)	O	O	O	O	O	O	S	S	O	S	30%
Zien, D. (R)	S	O	S	S	S	S	S	S	S	S	90%

### KEY

S = Supported WMC position	O = Opposed WMC position
PF = Paired For	PA = Paired Against
# = Resigned/Not serving in office	* = Not elected at time of vote
— = Absent with leave or not voting	** = Voice Vote

# State Assembly Voting Record

## STATE GOVERNMENT SPENDING

### Assembly Bill 1

**WMC POSITION:** Support

**STATUS:** PASSED THE ASSEMBLY; DIED IN THE SENATE.

AB 1 caps state government spending to increases in personal income. The vote recorded here is for passage in the Assembly.

## REFERENDA SCHEDULING

### Assembly Bill 2

**WMC POSITION:** Support

**STATUS:** PASSED THE ASSEMBLY; DIED IN THE SENATE.

AB 2 requires local government referenda to be scheduled in conjunction with other regularly scheduled elections. The vote recorded here is for passage in the Assembly.

## EMPLOYMENT DISCRIMINATION DAMAGES

### Assembly Bill 294

**WMC POSITION:** Oppose

**STATUS:** KILLED IN THE ASSEMBLY.

AB 294 creates a compensatory and punitive damage award in discrimination cases under Wisconsin's Fair Employment Act (WFEA). The award amount is to be set by the Department of Workforce Development (DWD) and is to include a payment to DWD equal to 10% of the amount. The vote recorded here is to indefinitely postpone the motion to withdraw the bill from committee, thereby killing the bill.

## TUITION TAX CREDIT

### Assembly Bill 320

**WMC POSITION:** Support

**STATUS:** PASSED THE ASSEMBLY; DIED IN THE SENATE.

AB 320 creates a corporate income and franchise tax credit for businesses that pay tuition for an individual to attend a university, college, or technical college. The credit is 50-percent of the costs associated with a degree granting program, and 75-percent under certain circumstances. The vote recorded here is for passage in the Assembly.

## SINGLE SALES FACTOR

### Assembly Bill 380

**WMC POSITION:** Support

**STATUS:** PASSED THE ASSEMBLY; DIED IN THE SENATE.

AB 380 changes the way in which multi-state corporations are taxed by changing the allocation formula from the current combination of sales, property and payroll to that of sales only. The bill would have reduced corporate income taxes by approximately \$80 million per year. The vote recorded here is for passage in the Assembly.

## ENVIRONMENTAL IMPROVEMENT PROGRAM

### Assembly Bill 479

**WMC POSITION:** Support

**STATUS:** PASSED THE ASSEMBLY; DIED IN THE SENATE.

The bill incorporates elements of the proposed Green Tier initiative with limited liability protections in cases where companies agree to address any problems an environmental evaluation uncovers. The vote recorded here is for passage in the Assembly.

## FELONS IN THE WORKPLACE

### Assembly Bill 521

**WMC POSITION:** Support

**STATUS:** PASSED THE ASSEMBLY; DIED IN THE SENATE.

AB 521 repeals the felony conviction status as a protected category under the Wisconsin Fair Employment Act (WFEA). The vote recorded here is for passage in the Assembly.

## UNEMPLOYMENT INSURANCE REFORM

### Assembly Bill 553

**WMC POSITION:** Support

**STATUS:** SIGNED INTO LAW AS 2001 WI ACT 35.

AB 553 is the UI Reform bill recommended by the Unemployment Insurance Advisory Council (UIAC) and contains various changes in the unemployment insurance law. WMC staff serves on the UIAC - which consists of five management and five labor representatives. The vote recorded here is for passage in the Assembly.

# State Assembly Voting Record

## APPRENTICESHIP TAX CREDIT

**Assembly Bill 555**

**WMC POSITION:** Support

**STATUS:** PASSED THE ASSEMBLY; DIED IN THE SENATE.

AB 555 creates an income tax credit for employers that pay wages to an apprentice who participates in a two to five year apprenticeship program. The vote recorded here is for passage in the Assembly.

## TREMPEALEAU COUNTY WETLANDS EXEMPTION

**AB 580**

**WMC POSITION:** Support

**STATUS:** PASSED ASSEMBLY; DIED IN THE SENATE.

AB 580 allows Ashley Furniture to fill a wetland less than 15 acres, if the city in which the site is located adopts a resolution stating the exemption is necessary. The vote recorded here is for passage in the Assembly.

## TAX RATES INCREASE

**Assembly Joint Resolution 2**

**WMC POSITION:** Support

**STATUS:** ADOPTED IN THE ASSEMBLY; DIED IN THE SENATE.

AJR 2 is a proposed Constitutional amendment that requires a two-thirds vote in each house of the legislature to pass a bill to increase the sales or income/franchise tax rates. The vote recorded here is for adoption in the Assembly.

## STATE BIENNIAL BUDGET

**Senate Bill 55 - Assembly Substitute**

**Amendment 1**

**WMC POSITION:** Support

**STATUS:** ASA 1 PASSED THE ASSEMBLY.

The Assembly version of the state budget included the following provisions:

### **SINGLE SALES FACTOR**

**APPORTIONMENT** - Included a phase-in of the single sales formula for multi-state corporations beginning in 2003.

### **CUSTOM COMPUTER SOFTWARE TAX -**

Eliminated this \$52 million sales tax increase that was included in the Governor's original budget and in the Senate version of the budget.

**COMBINED REPORTING** - Removed the combined tax reporting requirements that were inserted in the Senate version of the budget, eliminating a \$98 million tax increase on businesses.

**STATE SPENDING CAPS** - The Assembly budget included a provision that limited state government spending increases to the rate of increase in personal income in Wisconsin.

**WORKPLACE SAFETY** - The Assembly budget included the elimination of felons as a protected class under Wisconsin's Fair Employment Law.

**MIDWEST EXPRESS** - Included an ad valorem tax exemption for Midwest Express and other airlines as an incentive to keep maintenance hub facilities in Wisconsin.

**ENVIRONMENTAL IMPROVEMENT/AUDIT** - Included provisions of AB 479 which encourage businesses to conduct environmental performance evaluations by providing limited liability protections in cases where companies agree to address any problems an evaluation uncovers.

**POINT OF SERVICE MANDATE** - Repeals the point of service mandate that took effect April, 2001 under which employers with managed care plans must include an option for employees to see any provider they choose. The vote recorded here is for passage of Assembly Substitute Amendment 1 in the Assembly.

## WORKER'S COMPENSATION REFORM

**Senate Bill 251**

**WMC POSITION:** Support

**STATUS:** SIGNED INTO LAW AS 2001 WI ACT 37.

SB 251 makes various changes to the worker's compensation law recommended by the Wisconsin Worker's Compensation Advisory Council (WCAC). WMC staff serves on the WCAC - which consists of five management and five labor representatives. The vote recorded here is for concurrence in the Assembly.

# CORPORATION LAW REFORM

## Senate Bill 333

**WMC POSITION:** Support

**STATUS:** SIGNED INTO LAW AS 2001 WI ACT 44.

SB 333 makes a variety of changes to Wisconsin's corporation and securities laws including those sections relating to merger and conversion of business entities, exemptions from securities registration. The vote recorded here is for concurrence in the Assembly.

## STATE ASSEMBLY

Representative	AB 1	AB 2	AB 294	AB 320	AB 380	AB 479	AB 521	AB 553	AB 555	AB 580	AJR 2	SB55 ASA 1	SB 251	SB 333	w/WMC
Ainsworth, J. (R)	S	S	S	S	S	S	S	S	S	S	S	S	S	S	100%
Albers, S. (R)	S	S	S	S	O	S	S	O	S	S	S	S	S	S	86%
Balow, L. (D)	S	O	O	S	S	S	S	S	O	S	S	S	S	S	79%
Berceau, T. (D)	O	O	O	O	O	S	O	S	O	O	O	O	S	S	29%
Bies, G. (R)	S	S	S	S	S	S	S	O	S	S	S	S	S	S	93%
Black, S. (D)	O	O	O	O	O	S	O	S	O	O	O	O	S	S	29%
Bock, P. (D)	O	O	O	O	O	S	O	S	O	O	O	O	S	S	29%
Boyle, F. (D)	O	O	O	O	O	S	O	S	S	O	O	O	S	S	36%
Carpenter, T. (D)	S	PA	O	O	O	S	O	S	S	O	O	O	S	O	39%
Coggs, S. (D)	S	O	O	O	O	S	O	S	O	O	O	O	S	S	36%
Colon, P. (D)	S	O	O	O	O	S	O	S	O	S	O	O	S	S	43%
Cullen, D. (D)	S	O	O	O	O	S	O	S	O	O	O	O	S	S	36%
Duff, M. (R)	S	S	S	S	S	S	S	S	S	S	S	S	S	S	100%
Fitzgerald, J. (R)	S	S	S	S	S	S	S	S	S	S	S	S	S	S	100%
Foti, S. (R)	S	S	S	S	S	S	S	S	S	S	S	S	S	S	100%
Freese, S. (R)	S	S	S	S	S	S	S	S	S	S	S	S	S	S	100%
Friske, D. (R)	S	S	S	S	S	S	S	S	S	S	S	S	S	S	100%
Gard, J. (R)	S	S	S	S	S	S	S	S	S	S	S	S	S	S	100%
Gronemus, B. (D)	S	O	O	S	S	O	S	S	O	S	S	S	S	S	71%
Grothman, G. (R)	S	S	S	S	S	S	S	S	S	S	S	S	S	S	100%
Gunderson, S. (R)	S	S	S	S	S	S	S	S	S	S	S	S	S	S	100%
Gundrum, M. (R)	S	S	S	S	S	S	S	S	S	S	S	S	S	-	100%
Hahn, E. (R)	S	S	S	S	S	S	S	S	S	S	S	S	S	S	100%
Hebl, T. (D)	O	O	O	S	S	S	S	S	O	O	PF	O	S	S	54%
Hines, J.A. (R)	*	*	*	*	*	S	*	*	*	*	S	*	*	S	100%
Hoven, T. (R)	S	S	S	S	S	S	S	S	S	S	S	S	S	S	100%

*continued on next page*



## STATE ASSEMBLY

Representative	AB 1	AB 2	AB 294	AB 320	AB 380	AB 479	AB 521	AB 553	AB 555	AB 580	AJR 2	SB55 ASA 1	SB 251	SB 333	w/WMC
Huber, G. (D)	S	PA	O	O	S	S	S	S	O	O	O	O	S	S	54%
Hubler, M. (D)	O	O	O	O	O	S	S	S	O	S	S	O	S	S	50%
Huebsch, M. (R)	S	S	S	S	S	S	S	S	S	S	S	S	S	S	100%
Hundertmark, J. (R)	S	S	S	S	S	S	S	S	S	S	S	S	S	S	100%
Jensen, S. (R)	S	S	S	S	S	S	S	S	S	S	S	S	S	S	100%
Jeskewitz, S. (R)	S	S	S	S	S	S	S	S	S	S	S	S	S	S	100%
Johnsrud, D. (R)	S	S	S	S	S	S	S	S	S	S	S	S	S	S	100%
Kaufert, D. (R)	S	S	S	S	S	S	S	S	S	S	S	S	S	S	100%
Kedzie, N. (R)	S	S	S	S	S	S	S	S	S	S	S	S	S	S	100%
Kestell, S. (R)	S	O	S	S	S	S	S	S	S	S	S	S	S	S	93%
Krawczyk, J. (R)	S	S	-	S	-	S	S	O	S	S	S	S	S	S	92%
Kreibich, R. (R)	S	S	S	S	S	S	S	S	S	S	-	S	S	S	100%
Kreuser, J. (D)	O	O	O	O	S	S	S	S	O	S	O	O	S	S	50%
Krug, S. (D)	O	O	O	S	O	S	O	S	O	O	O	O	S	S	36%
Krusick, M. (D)	S	O	O	S	S	S	S	S	O	O	S	O	S	S	64%
LaFave, J. (D)	S	O	O	S	S	S	S	S	O	O	S	O	S	S	64%
Ladwig, B. (R)	S	S	S	S	S	S	S	S	S	S	S	S	S	S	100%
Lasee, F. (R)	S	PF	S	S	S	S	S	S	O	S	S	S	S	S	92%
Lassa, J. (D)	S	O	O	S	S	S	S	S	O	O	S	O	S	S	64%
Lehman, J. (D)	O	O	O	O	O	S	O	S	O	O	O	O	S	S	29%
Lehman, M. (R)	O	S	S	S	S	S	S	S	S	S	O	S	S	S	86%
Leibham, J. (R)	S	S	S	S	S	S	S	S	S	S	S	S	S	S	100%
Lippert, M. (R)	S	S	S	S	S	S	S	S	S	S	S	S	S	S	100%
Loeffelholz, G. (R)	S	S	S	S	S	S	S	S	S	S	S	S	S	S	100%
McCormick, T. (R)	S	S	S	S	S	S	S	S	S	S	S	S	S	S	100%
Meyer, D. (R)	S	S	S	S	S	S	S	S	S	S	S	S	S	S	100%
Meyerhofer, L. (D)	S	O	O	S	S	S	S	S	O	S	O	O	S	S	64%
Miller, M. (D)	O	O	O	O	O	S	O	S	O	O	O	O	S	S	29%
Montgomery, P. (R)	S	S	-	S	-	S	S	S	S	S	-	S	S	S	100%
Morris-Tatum, J. (D)	S	O	O	O	O	S	O	S	O	O	O	O	S	O	29%
Musser, T. (R)	S	S	S	S	S	S	S	S	S	S	S	S	S	S	100%
Nass, S. (R)	S	S	S	S	S	S	S	S	S	S	S	S	S	S	100%
Olsen, L. (R)	S	O	S	S	S	S	S	S	S	S	S	S	S	S	93%
Ott, A. (R)	S	O	S	S	S	S	S	S	S	S	O	S	S	S	86%
Owens, C. (R)	S	PF	S	S	S	S	S	S	S	S	S	S	S	S	100%
Petrowski, J. (R)	S	S	S	S	S	S	S	S	S	S	S	S	S	S	100%
Pettis, M. (R)	S	S	S	S	S	S	S	S	S	S	S	S	S	S	100%
Plale, J. (D)	-	S	O	S	S	S	S	S	O	S	S	S	S	S	85%
Plouff, J. (D)	S	O	O	O	O	S	S	S	O	O	O	O	S	S	43%

## STATE ASSEMBLY

Representative	AB 1	AB 2	AB 294	AB 320	AB 380	AB 479	AB 521	AB 553	AB 555	AB 580	AJR 2	SB55 ASA 1	SB 251	SB 333	w/WMC
Pocan, M. (D)	O	O	O	O	O	S	O	S	O	O	O	O	S	S	29%
Powers, M. (R)	S	S	S	S	S	S	S	S	S	S	S	S	S	S	100%
Reynolds, M. (D)	O	O	O	S	O	S	S	S	-	S	S	O	S	S	62%
Rhoades, K. (R)	S	S	S	S	S	S	S	S	S	S	S	S	S	S	100%
Richards, J. (D)	O	O	O	O	O	S	O	S	O	O	O	O	S	S	29%
Riley, A. (D)	O	O	O	S	S	S	O	S	O	S	O	O	S	S	50%
Ryba, J. (D)	S	O	O	O	O	S	O	S	O	S	S	O	S	S	50%
Schneider, M. (D)	O	O	O	O	S	S	O	S	S	O	O	O	S	O	36%
Schooff, D. (D)	S	O	O	S	S	S	S	S	O	S	S	S	S	S	79%
Seratti, L. (R)	S	S	S	S	S	S	S	S	S	S	S	S	S	-	100%
Sherman, G. (D)	O	O	O	O	O	S	O	S	O	O	PA	O	S	S	31%
Shilling, J. (D)	S	O	O	S	O	S	S	S	O	S	S	O	S	S	64%
Sinicki, C. (D)	O	O	O	O	O	S	O	S	O	O	O	O	O	S	21%
Skindrud, R. (R)	S	S	S	S	S	S	S	S	S	S	S	S	S	S	100%
Starzyk, S. (R)	S	S	S	S	S	S	S	S	S	S	S	S	S	S	100%
Staskunas, T. (D)	S	O	O	S	S	S	S	S	O	S	S	O	S	S	71%
Steinbrink, J. (D)	S	O	O	O	S	S	S	S	O	S	S	O	S	S	64%
Stone, J. (R)	S	S	S	S	S	S	S	S	S	S	S	S	S	S	100%
Suder, S. (R)	S	S	S	S	S	O	S	S	S	S	S	S	S	S	93%
Sykora, T. (R)	S	S	S	S	S	S	S	-	S	S	S	S	S	S	100%
Townsend, J. (R)	S	S	S	S	S	S	S	S	S	S	S	S	S	S	100%
Travis, D. (D)	O	O	O	S	S	S	O	S	O	O	O	O	S	S	43%
Turner, R. (D)	O	O	O	O	O	S	O	S	O	S	O	O	S	S	36%
Underheim, G. (R)	S	S	S	S	S	S	S	S	S	S	S	S	S	S	100%
Urban, F. (R)	S	S	S	S	S	S	S	S	S	O	O	S	S	-	85%
Vrakas, D. (R)	S	S	S	S	S	S	S	S	S	S	S	S	S	S	100%
Wade, Joan (R)	S	S	#	#	#	#	#	#	#	#	#	S	#	#	100%
Walker, S. (R)	S	S	S	S	S	S	S	S	S	S	S	S	S	S	100%
Ward, D. (R)	S	S	S	S	S	S	S	S	S	S	S	S	S	S	100%
Wasserman, S. (D)	S	O	O	S	S	S	S	S	S	O	S	O	S	S	71%
Wieckert, S. (R)	S	S	S	S	S	S	S	S	S	S	S	S	S	S	100%
Williams, A. (D)	O	O	O	O	O	S	O	-	O	S	-	O	S	S	33%
Wood, W. (D)	S	O	O	S	O	S	O	S	O	O	O	O	S	S	43%
Young, L. (D)	O	O	O	O	O	S	O	S	O	O	O	O	S	S	29%
Ziegelbauer, R. (D)	S	S	O	S	S	S	S	S	S	S	S	S	S	S	93%

KEY		
S = Supported WMC position	O = Opposed WMC position	# = Resigned/Not serving in office
PF = Paired For	PA = Paired Against	* = Not elected at time of vote
— = Absent with leave or not voting	** = Voice Vote	